



Mobile Printers

MX30 / MX30i



A Portable Light Weight Design
MX30 & MX30i is Your Best Pal in Mobile Life.

GoDEX MX30 & MX30i Mobile Printer is powered by Lithium-ion battery for longer uptime, along with water / dust resistant and shatterproof design. MX30i has an embedded OLED panel to display messages. MX30 & MX30i series fit 1.5" to 3" label roll, which is a powerful tool for retail / storage / parking lot applications.



- Supports multiple label width & types.
- Drop & Fit label installation design.
- Intuitive OLED display with 3 buttons.
- Water and dust resistant meeting IP54 standard.
- Versatile interfaces with both wire (RS232 and USB) & wireless (Bluetooth and Wi-Fi) connectivity.

GoDEX

Specification

MX30/MX30i

Mobile Printer

Model	MX30	MX30i
Print Method	Direct Thermal	
Resolution	203 dpi (8 dots/mm)	
Print Speed	Up to 4 IPS (101.6 mm/s)	
Print Width	2.8" (72 mm)	
Print Length	30" (~762 mm)	
Processor	32 Bit RISC CPU	
Memory Flash	128 MB Flash (60 MB for user storage)	
SDRAM	32 MB	
Sensor Type	Gap sensor , Fixed transmissive sensor , Fixed reflective sensor	
Media Types	Direct Thermal receipt, anti-UV receipt, gap label, left side alignment Inter-label gap size from 2 mm to 4 mm. 3 mm preferred	
Width	Max. 3.15" (80 mm), Min. 1.5" (38.1 mm)	
Thickness	Min 0.0508 mm, Max 0.165 mm	
Media roll Diameter	Max. 2.35" (60 mm) on 0.5" (12.5 mm) core	
Printer Language	GPOS Emulations or EZPL / GZPL / GEPL Emulations	
Software	Label Design Software GoLabel (for EZPL only), GoApp (Andriod),GoApp (iOS) Driver MAC, Linux, Windows 2000 / XP / VISTA / Windows 7 / Windows 8.1/Windows 10 DLL Win CE, .NET, Andriod, Windows Mobile, Windows 2000 / XP / VISTA / Windows 7/ 8.1/10 , Android,iOS	
Resident Fonts	Bitmap Fonts 6, 8, 10, 12, 14, 18, 24, 30, 16x26 and OCR A & B. 0°, 90°, 180°, 270° rotatable TTF Fonts TTF Fonts (Bold / Italic / Underline). 0°,90°, 180°, 270° rotatable	
Download Fonts	Bitmap Fonts 90°, 180°, 270° rotatable, single characters 90°, 180°, 270° rotatable Asian Fonts 16x16, 24x24. Traditional Chinese (BIG-5), Simplified Chinese (GB2312), Japanese (S - JIS), Korean (KS - X1001) TTF Fonts 90°, 180°, 270° rotatable and 8 times expandable in horizontal and vertical directions 90°, 180°, 270° rotatable	
Barcodes	1-D Bar codes Code 39, Code 93, EAN-8, EAN-13, EAN 8/13 (with 2 & 5 digits extension), UPC-A, UPC-E, UPC-A and UPC-E with EAN 2 or 5 digit extension, Interleaved 2-of-5 (I 2 of 5), Interleaved 2- o-f 5 with Shipping Bearer Bars, Codabar, Code 128 (subset A, B, C), EAN 128, RPS 128, UCC 128, UCC/EAN-128 K-Mart, Random Weight, Postnet, ITF 14, China Postal Code, HIBC, MSI, Plessey, Telepen, FIM, GS1 DataBar, German Post Code, Planet 11 & 13 digit, Japanese Postnet, Standard 2 of 5, Industrial 2 of 5 , Logmars, Code 11, ISBT -128, Code 32 2-D Bar codes PDF417, Datamatrix code, MaxiCode, QR code, Micro PDF417, Micro QR code and Aztec code, Code 49, Codablock F , TLC 39	
Code Pages	CODEPAGE 437, 850, 851 , 852, 855, 857, 860, 861 , 862, 863, 865, 866, 869, 737 WINDOWS 1250, 1251, 1252, 1253, 1254, 1255, 1257 Unicode UTF8 , UTF16BE , UTF16LE	
Graphics	Resident graphic file types are BMP and PCX, other graphic formats are downloadable from the software	
Interfaces	RS232 + USB 2.0 port, mini-B type connector Bluetooth 2.1 + EDR	
Control Panel	4 dual color LEDs for Power, Battery, Communication, Error status indication. 3 buttons for Power, Feed and BT functions	
LCD Display	Graphic OLED 128 x 64 dots with 3 buttons for Up, Down and Enter functions	
Power Adapter	Switching power supply I/P: 100 / 240 V AC, 50 / 60 Hz, DC 9 V / 2.2 A	Switching power supply I/P: 100 / 240 V AC, 50 / 60 Hz, DC 9 V / 2.0 A
Battery	Rechargeable DC 7.4 V Lithium-ion battery, 2500 mAH or higher capacitance	
Environment	Operation Temperature 14 °F to 122 °F (-10°C to 50°C) Storage Temperature -4 °F to 140 °F (-20°C to 60°C)	
Humidity	Operation 10 – 90 %, non - condensing. Storage 10 – 90 %, non - condensing.	
IP Rating	Intrusion Protection, IP42 requirement for case design, IP54 for protective case	
Drop Level	1.5 meter height	
Agency Approvals	CE EMC, FCC part 15B class B, FCC Part 15C, SRRC, NCC, CB, UL, cUL, Energy Star V2.0	
Dimension	Length 6.71" (170.63 mm) Height 3.11" (79 mm) Width 4.48" (114.01 mm)	
Weight	1.45 lbs (660 g), with battery	1.47 lbs (670 g), with battery
Options	USB cable RS-232 cable Li-ion battery 4-bay battery charger station Car charger adapter Protective case WiFi (comply with IEEE 802.11b/g/n)	

*Specifications are subject to change without notice. All company and/or product names are trademarks and/or registered trademarks of their respective owners.

Applications

Applications for Labels & Barcodes

MX30 & MX30i support label & barcode printings Anywhere and Anytime.



Warehouses, Logistic & Transportation

Cross Docking, inventory management, receiving / shipping, work - in - process tracking, or related industrial applications.

Retail

Content labels, receipts for registered mails, invoices & receipts, postage labels, etc.

Parking Management

Parking receipt, parking ticket, and so on.

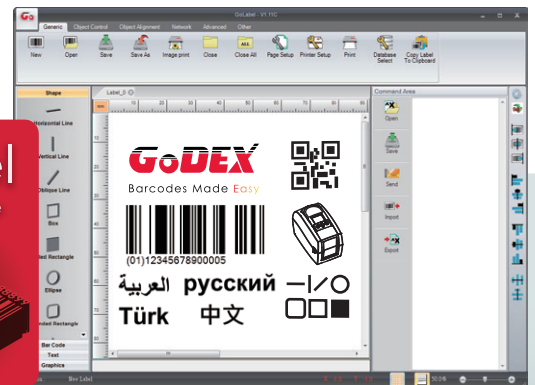


LABEL DESIGN SOFTWARE

GoLabel Software / User Friendly

GoLabel is based on a WYSIWYG (what you see is what you get) user interface, makes everything so easy for you to create and print barcode labels. GoLabel is the first - choice label design software that you can't miss it!

Go visit www.godexintl.com and download GoLabel to experience it!



RIBBONS

High quality original GoDEX thermal transfer ribbons

GoDEX offers premium thermal transfer ribbons that will fit most of your printing applications.

- Wax
- Wax / Resin
- Resin
- Near Edge

